

# BRONTO RLP SERIES



WHEN LIVES ARE IN THE BALANCE AND SECONDS COUNT

# BRONTO RLP SERIES

## WATERWAY:

A protected stainless steel waterway pipe provides mobility that can't be achieved with under-ladder mounted waterways.

## LADDER:

NFPA rated ladder allowing for continuous rescue.

## PLATFORM:

Platform has a 1000-lbs. personnel rating and a 210-lbs. equipment allowance. The platform can also swivel 45 degrees to the left and right.

## BRONTO® SKYLIFT:

Closed boom, telescoping and articulating device capable of 100', 114' and 134' of vertical reach and up to 88' of horizontal-side reach.

## GROUND LADDERS:

Rear storage area capable of providing a full complement of ground ladders—minimum 115'.

## CAB:

Cab exceeds ECE R-29 crashworthiness standard.

## STABILIZERS:

Automatic leveling system that allows aerial setup in 40 seconds or less.

Short 230" wheelbase.

The Bronto® RLP Series package is built on the fire service specialized Cyclone® II chassis. The Cyclone II cab exceeds the ECE R-29 crashworthiness standard, the European benchmark for crash testing and safety in the commercial trucking industry.

The RLP Series has one of the shortest wheelbases of any platform. The 230" wheelbase coupled with the full 45 degree steering cramp angle makes the RLP Series extremely maneuverable. In addition to these benefits, since the platform is cradled in the middle of the body, the RLP Series has no front or rear overhang. Eliminating the front overhang greatly improves visibility for the driver and removes the potential of striking objects with the platform during tight turns.

The RLP Series provides excellent ride quality too. Due to the typical center of gravity of an aerial platform, the single most important part of the suspension system on an aerial truck is the rear suspension. On the RLP Series we utilize the walking beam suspension system on the rear axles as standard. The Ridewell Dynalastic system ensures a smooth ride for personnel and improved vehicle control for the driver.

## COMPARTMENT SPACE:

Generous compartment space (175 cu. ft. with a pump and tank) — providing ample room for rescue tools and accessories.

## FIRE FIGHTING PACKAGE:

300-gallon water tank with a 2000-GPM water pump.

## HOSEBED CAPACITY:

Right-side hosebed storage (1000' of 5" LDH) which can be loaded without moving the aerial device.





## RESCUE LADDER PLATFORM

The dimensions of the side-mounted ladder exceed NFPA requirements allowing for continuous rescue. The ladder is mounted directly to the boom for outstanding stability. The Bronto RLP Series is designed to support distributed loads on the ladder, even with a firefighter in the bucket. The distributed load can be supported at any angle of elevation, length of extension, and through 360 degrees of rotation.

COMBINING VERSATILE PLATFORM PERFORMANCE WITH AN UNMATCHED FIRE APPARATUS PACKAGE, THE BRONTO RLP SERIES ALLOWS YOU TO GET MORE USE FROM A SINGLE PRODUCT THAN ANY OTHER AERIAL ON THE MARKET.



## UNEQUALLED ACCESS

The 170 degree articulating jib boom provides exceptional performance around buildings and superior access for rescues from windows that other aerials can't reach without repositioning. The Bronto's jib boom features a clear work area above the knuckle, making it easier to position the aerial in confined situations.

The Bronto provides the aerial operator with outstanding control of the boom. Operation on congested streets is simple and safe since the boom can be lowered in front of the cab or the body through 360 degrees.

## UNEQUALLED STABILITY

The Bronto's closed boom design provides the most stable work platform in the industry with an incredibly smooth platform ride, even when articulated.



## BELOW GRADE RESCUE CAPABILITIES

The Bronto's 170 degree jib boom movement allows operation up to 15' below grade which is valuable for water rescue and incident access from bridges.

## ROCK SOLID OPERATIONS

Bronto allows full capability when operating off the front of the vehicle without special grade limitations, even when steep grades require operations with the front tires off the ground.

## REDUCED MAINTENANCE NEEDS

Constructed with the highest grade steel (90,000 PSI), the closed boom is painted inside and out for maximum protection from rust. The interior walls of the boom can be easily inspected.

The ladder is maintenance free with no painting or rung covers required. In addition, the aerial boom is self-lubricating and requires no periodic lubrication.



## UP AND OVER

The jib boom on the Bronto swings through 170 degree and allows you to reach over building obstacles and down to the roof. The up and over feature also improves master stream control in fire fighting operations.

The 170 degrees jib boom movement allows you to set down on the roof of a 78' tall building that has a 22' parapet wall.

The basket can be set within inches of the roof line because the platform is designed with a clean underside and an integral waterway piping.



## AUTOMATIC STABILIZER LEVELING

Automatic deployment allows the operator to quickly and easily stabilize and level the apparatus. The operator activates the automatic system and then presses a series of only three buttons to completely deploy and level the aerial in as little as 40 seconds. Equipped with a tethered remote control, the operator is able to clearly view all operations.

## EFFICIENT AND SIMPLE PUMP PANEL

Even while maintaining a short 230" wheelbase, the Bronto incorporates an efficient, easy to use pump panel.

## RLP SERIES GLOBAL CONTROL SYSTEM HIGHLIGHTS

- Turntable and platform control consoles have been totally redesigned.
- New LCD screen displays actual working height, actual outreach and main boom angle. The basic display mode shows all vital information needed when operating device.
- Enhanced alignment features assists operator in preparing boom for quick deployment and stowage.
- Water monitor flow pressure and breathing air level information is integrated into both turntable and platform displays.
- The automatic leveling control panel has been integrated into the rear control station for easy storage.
- Electric membrane push buttons control monitor and water curtain functions.

## VERSATILE PLATFORM WITH 90° SWIVEL

The platform can swivel 45 degrees to the left and right. Swivel control improves the operator's ability to approach a window or direct a master stream. Swivel capability also allows for greater flexibility in truck positioning at the scene.

- 1210-lbs. rated capacity
- 960-lbs. capacity while flowing water
- Large 20 sq. ft. platform work area with extended rescue deck
- Full operational capacity in up to 45-mph wind
- 1000-lbs. platform lifting eye
- 110, 220, or 480 volt power available in the platform
- Optional platform outlet for hydraulic tools



## NFPA RATED QUINT PACKAGE

### SideStacker® Hosebed

The hosebed of the Bronto RLP Series is easier to load with hose than a pumper and has capacity for 1000' of 5" hose. Hose can be deployed and loaded while the ladder is stowed.

### Ample Compartment Space

The Bronto RLP Series has 175 cu. ft. of compartment space. The compartments are designed to be low and large for easy access to heavy equipment. When the Bronto is constructed as a true truck company (without pump, tank, or hosebeds), 300 cu. ft. of compartment space is possible.

### 115' Ground Ladder Complement

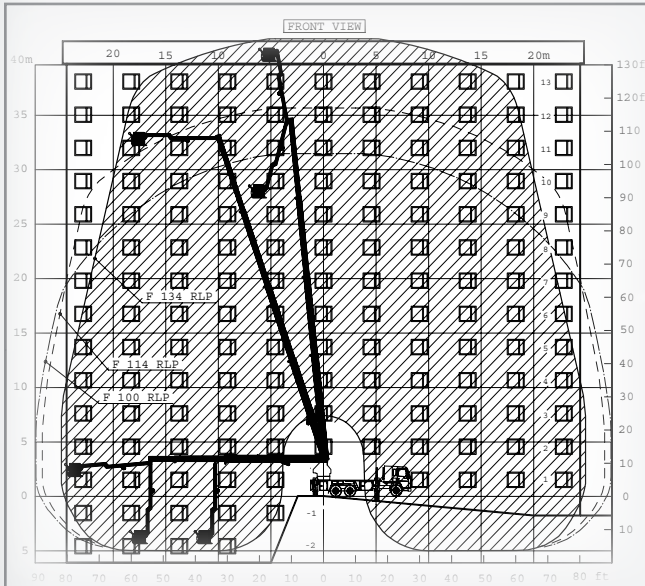
Even the quint version of the Bronto RLP Series has the ability to carry 115' of enclosed ground ladders. This complement includes a 35', 2-section ladder (130-lbs.), which allows for two-person setup, instead of a heavier 3-section ladder (170-lbs.) that requires more personnel.

### Low Travel Height

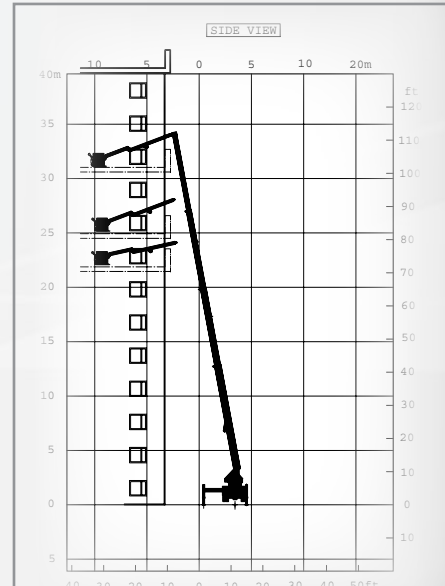
The Bronto RLP Series low travel height enables it to fit in most fire station door openings.



# REACH CHARTS



This building scrub chart shows windows that can be reached with the 100', 114' and 134' RLP Series products.



RLP series reach chart side view shows the articulated roof access of the 100', 114' and 134' RLP series products.



WHEN LIVES ARE IN THE BALANCE AND SECONDS COUNT