

- Freightliner M2 2 door chassis
- Cummins ISC 330 HP Engine
- 12K Front and 23K Rear axles
- 50 Gallon Left Hand Side Fuel Tank
- EVS300 Transmission
- (2) 1520CCA Batteries
- 270 Alternator
- Air Conditioning and Heating
- Standard Bumper
- Air inlet in driver's door step
- Deluxe Chassis Trim Package
- AM/FM/ Weather band Radio and CD Player
- West Coast Heated cab mirrors
- Seating Package
  - (1) Talladega 910 Hi-back air Driver
  - (1) 911 Fixed Officer Seat

## **E-ONE Tradition Pumper Freightliner M2 Chassis**

### ***Shop Order No. 134190***



- Super Smart Power Battery Charger with 20 amp receptacle
- Driver Full Height with 36" /56" / 36" Storage Compartments
- Officer Half Side with 36" and 36" Storage Compartments
- Officer Side Adjustable ladder storage rack
- Vinyl Black Hosebed and Crosslay Covers
- Top Mount Pump Module
- 1000 Gallon "T" Booster Tank
- 30 Gallon Foam Tank (Foam System not included)

- Hard Suction Rack on Officer Side Rack
- Hard Suction Rack on Driver Side compartment top
- One (1) Long Hosebed Divider
- SCBA Wheelwell Storage—2 bottles per side
- Hale Qflo 1250 Pump
- Mechanical Speed Counter
- Steamer on Officer and Driver's side
- 2" Tank Fill
- 2.5" Driver Side Intake
- 2.5" Officer Side Intake
- (2) 1.5" Crosslays
- (2) 2.5" Driver's Side Discharges
- (1) 2.5" Right Side Discharge



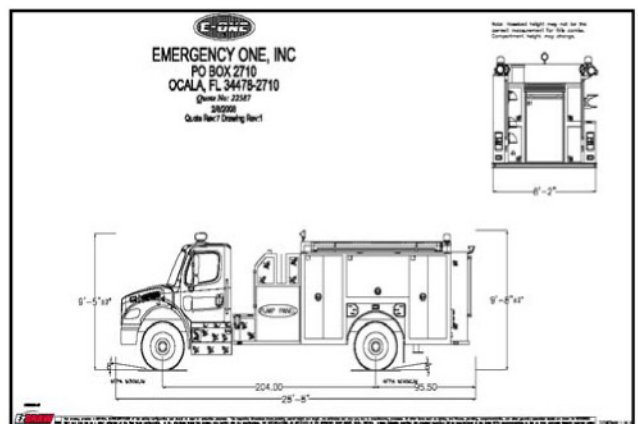
- (1) 2.5" Left Rear Discharge
- 3" Deck gun Discharge
- Class 1 Captain pressure governor
- Class 1 Intelli Tank Water Level Gauge Pump Panel
- Class 1 Intelli Tank Water Level Gauge Officer Rear
- Enfo IV System
- Multiplex electrical system
- Federal Signal JetStream 60" LED Lightbar
- Federal Signal MOD Lower Level Warning Lights
- Federal Signal Model SY12 Sentry Rear Upper Body Warning Lights with driver red and officer amber
- Federal Signal PA 300 Siren
- Federal Signal Dynamax MS100-EF Speaker
- License Plate LED Light
- DOT LED Body Light Package



- Federal Signal QuadraFlare LED Tailights
- Unity Deck, Crosslay, and Hosebed Lights
- DOT Reflector Kit
- Backup Alarm
- 4" NFPA Scotchlite Stripe
- Body and Chassis Paint—DuPont L6572 EG Red
- Electronic CD Manuals
- All Standard E-One Warranties
  - 1 Year E-One Warranty
  - 10 Year/ 100,000 Mile Structural
  - 10 Year Stainless Steel Plumbing
  - 10 Year Paint and Perforation

#### Loose Equipment Included

- (1) 6# pick head axe
- (1) 6# pick flat axe
- (2) Axe Bracket Set
- (2) 10' section of 6" PVC Hard Suction Hose
- (1) AlcoLite FL-10 10' folding ladder
- (1) AlcoLite PRL-14 14' roof ladder
- (1) AlcoLite PEL-24 24' 2-section ladder
- (1) Pair of Zico folding ladder brackets
- (1) Nupla YPD-10 10' fiberglass pike pole
- (1) Pair of Pike Pole Brackets
- (2) Zico AC-32 Aluminum Wheel Chocks
- (1) Set Stainless Steel deep dish wheel covers  
*(not pictured)*



**For More Information Contact**  
**Sunbelt Fire Truck Sales**  
**1-800-642-8484**  
**firetrucksales@sunbeltfire.com**

#### **Our Mission Statement**

**"To always listen and know our customer's needs in order to provide them with the best products and service in the industry"**