



WE INNOVATE EVERY DAY.  
e-one.com

## NON-WALK-IN RESCUE



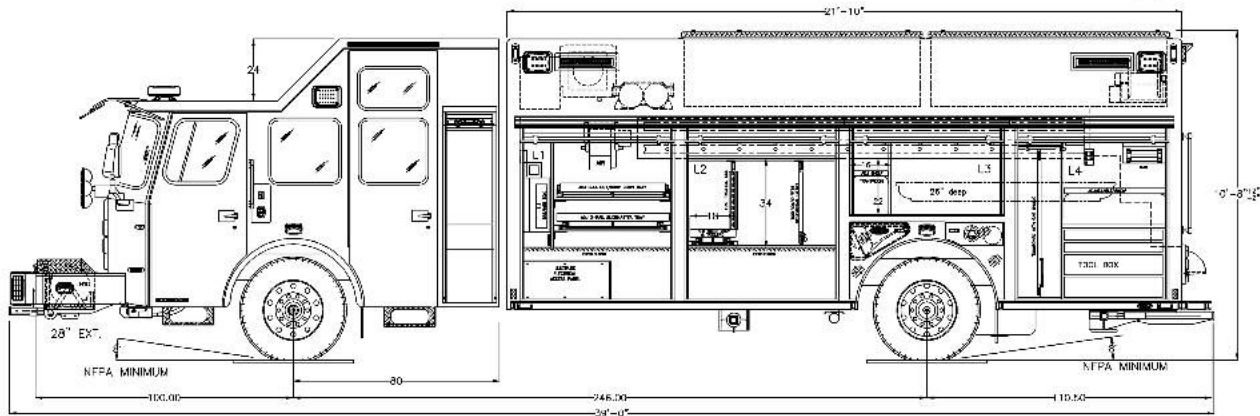
## SPECIFICATIONS

The E-ONE Non Walk-In Rescue allows first responders to arrive on the scene prepared. The E-ONE Non Walk-In Rescue ensures all necessary gear is stored organized in spacious transverse compartments with optional additional rooftop compartments, under-body compartments and a recessed forward body storage pan for HRT, generators, light towers or cascade.

E-ONE engineers and builds extruded aluminum or formed 304L stainless steel products that meet or exceed NFPA standards to protect individuals risking their lives to serve those in need. And by offering our Non Walk-In on the industry's strongest custom cab and chassis, E-ONE meets first responders' critical needs without sacrificing safety or quality. Respond with more than a tool box on wheels - the E-ONE Non Walk-In Rescue.

OUR VEHICLES CONNECT AND PROTECT  
PEOPLE AROUND THE WORLD EVERY DAY.  
www.revgroup.com





## CHASSIS

- Industry leading Cyclone® or Typhoon® chassis with short, medium, long, and extended length 2 or 4-door cabs
- Heavy duty 12" C-channel frame
- Up to 600 HP Engine
- Standard safety features such as roll cage cab, CrewGuard & ABS brakes
- Optional safety features such as airbags & G4 (electronic stability control)

## BODY

- Body available in extruded aluminum or formed 304L stainless steel
- Body sizes ranging from 16' to 26'
- Exterior access to storage compartments
- Roll up or hinged doors
- Under body compartments
- Awning: electric or manual
- Receivers designed for electric winch or rope rescues

## EXTERIOR

- Multiple body configurations available including popular options such as rooftop compartments with center walkway and front storage pan, hydraulic system compartments, slide-out tool boards, air system compartments to store fill station, air reels, air packs and hoses
- Upper body access options: built-in staircase, officer-side ladder, pull down staircase, or officer's side staircase

## RESCUE

- 250-750 GPM pump
- 200-500 gallon water tank
- Foam systems available
- Custom E-ONE PTO driven HRT system. 3, 4 or 6 tools systems, compatible with most hydraulic rescue tools
- Breathing air systems: compressors, fill stations, air bottles/cascade system
- Generators: 5kW to 75kW, direct drive, hydraulic, diesel

## ELECTRICAL

- Multiplex electrical system with color display provides increased feature capability and improved diagnostics
- Light tower on top of cab or body
- Whelen® optical and audible warning packages standard, others optional